

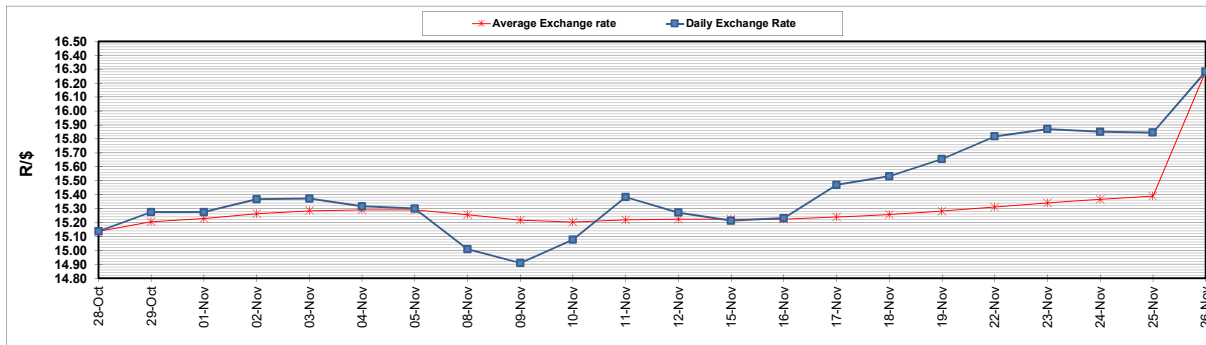
	PETROL 95 ULP	PETROL 93 ULP & LRP	DIESEL 0.05%	DIESEL 0.005%	ILL. PAR.
GAUTENG PUMP PRICE (SA c/l) AS FROM 01/12/2021	2,029.000	2,007.000	-	-	-
WHOLESALE PRICE (SA c/l) AS FROM 01/12/2021	-	-	1,792.480	1,797.880	1,167.688
SINGLE NATIONAL MAXIMUM RETAIL PRICE	-	-	-	-	1,489.000
BASIC FUEL PRICE - 26/11/2021 (SA c/l)	893.057	876.626	877.317	883.456	865.530
PRESS RELEASE CONTRIBUTION TO BFP 26/11/2021 - 26/11/2021 (SA c/l)	937.110	925.110	917.630	921.030	912.128
UNIT OVER/(UNDER) RECOVERY - 26/11/2021 (SA c/l)	44.053	48.484	40.313	37.574	46.598
AVERAGE BASIC FUEL PRICE 26/11/2021 - 26/11/2021	893.057	876.626	877.317	883.456	865.530
AVERAGE UNIT OVER/(UNDER) RECOVERY 26/11/2021 - 26/11/2021	44.053	48.483	40.313	37.574	46.598

ANALYSIS MOVEMENT OF AVERAGE OVER/(UNDER) RECOVERY

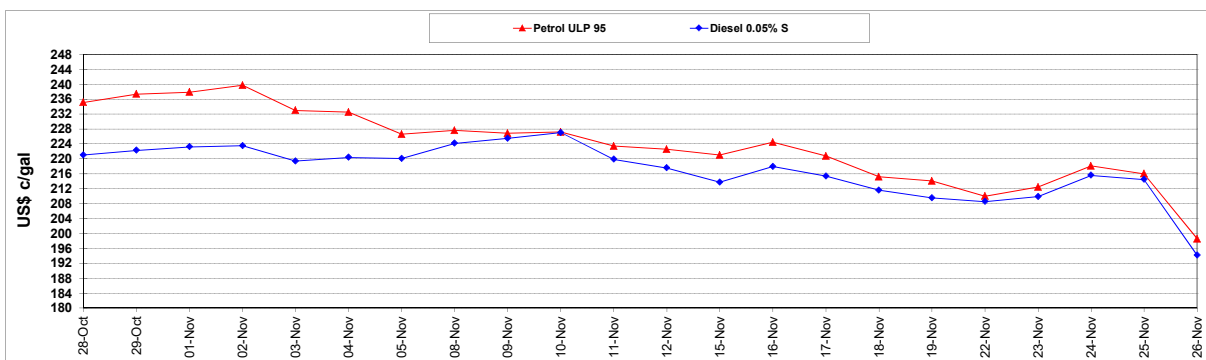
	PETROL 95	PETROL 93	DIESEL 0.05%	DIESEL 0.005%	ILL. PAR.
- MOVEMENT IN INTERNATIONAL PRODUCT PRICES	92.992	96.522	88.389	85.987	94.028
- MOVEMENT IN EXCHANGE RATE	(48.939)	(48.038)	(48.076)	(48.413)	(47.430)
AVERAGE UNIT OVER/(UNDER) RECOVERY 26/11/2021 - 26/11/2021	44.053	48.483	40.313	37.574	46.598

R/\$ EXCHANGE RATE - (R/\$16.2813 - 26/11/2021)

EXCHANGE RATE USED IN BASIC FUEL PRICE



INTERNATIONAL PRODUCT PRICES OF BASKET USED IN BASIC FUEL PRICE



BASIC FUEL PRICE IN SA CENTS PER LITRE

